



# REFLECTIVE

## WHY REFLECTIVE

Enhance visibility with these lightweight films while offering superior stretch to compliment the latest apparel designs. From low to high candlepower, these versatile reflective solutions come in a wide range of colors to create aesthetic differentiation.

## REFLECTIVE FAMILY BENEFITS



HIGH VISIBILITY



ABRASION RESISTANT



STRETCH & RECOVERY



WITHSTANDS 60°C WASH

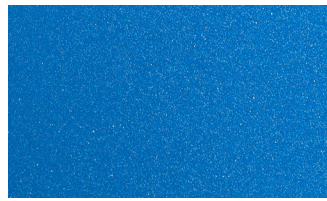
## BEMIS BRILLIANT® (RS4500) / STOCK COLORS



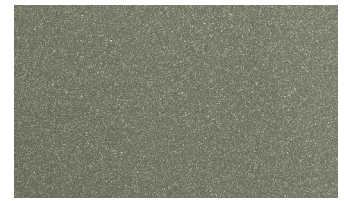
**PINK**  
PANTONE 688 C | ~350 CD/LUX



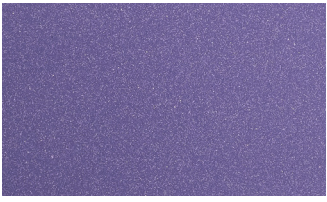
**RED**  
PANTONE 1805 C | ~350 CD/LUX



**BLUE**  
PANTONE 7691 C | ~350 CD/LUX



**GREEN**  
PANTONE 5625 C | ~350 CD/LUX



**PURPLE**  
PANTONE 7676 C | ~350 CD/LUX



**GOLD**  
PANTONE 7504 C | ~350 CD/LUX

Brilliant® is a registered trademark of Safe Reflections, Inc. | US Patent No US8470394B2 and WIPO No WO2015030770A1



# REFLECTIVE

## LIGHTVISION (RS4000) / STOCK COLORS

---



**BLACK**  
~250 CD/LUX

## REFLECTIVE STRETCH (RS3000) / STOCK COLORS

---



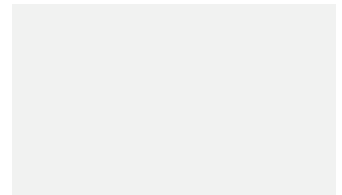
**SILVER**  
PANTONE 877 C | ~400 CD/LUX



**BLACK**  
PANTONE 19-4006 TPX | ~20 CD/LUX



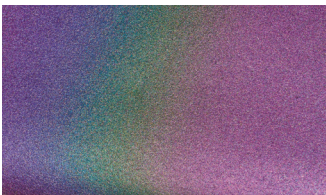
**GREY**  
PANTONE 17-1501 TPX | ~20 CD/LUX



**SNOW**  
PANTONE 11-0601 TPX | ~20 CD/LUX

## REFLECTIVE STRETCH (RS3500) / STOCK COLORS

---



**RAINBOW**  
~30 CD/LUX

*Brilliant® is a registered trademark of Safe Reflections, Inc. | US Patent No US8470394B2 and WIPO No WO2015030770A1*